

Field Mount Status Relay

SPST Status Relay With Integral Current Switch



DESCRIPTION

The **H120** and **H120NC** offer a fixed current switch and SPST relay in a single externally mounted housing. Combining the current sensor and relay in one easy-to-install package eliminates the need to fit multiple devices into small electrical enclosures and simplifies the installation. Eliminate the labor associated with installing a separate current sensor.

APPLICATIONS

- Unit Ventilators
- Fan Coil Units
- Exhaust Fans
- Fan Terminal Units
- Fractional HP Motors
- Light Resistive Loads

FEATURES

- The current switch and relay are in series...connect the contacts to the load and your current switch is automatically installed
- The nipple mount housing can be connected to any 1/2" conduit knockout for installation versatility
- Relay coil LED streamlines job commissioning and check out
- HP ratings make the H120 ideal for control and status of fractional HP motors
- 5-year warranty
- NEMA 1 rated housing may be used in plenum spaces
- Can be externally mounted to the electrical enclosure...space saver
- 0.1A turn-on...easily monitors the smallest motors

SPECIFICATIONS



Sensor Power

Induced from relay coil power

Operating Temperature

-15° to 60°C (5° to 140°F) (13.8A max.), -15° to 50°C (5° to 122°F) (20A max.)

Operating Humidity

10-90% RH non-condensing

Expected Relay Life (mechanical)

10 million cycles

Relay Status

LED ON=energized

Wire Specifications:

Lead Length

14" (356 mm) min.

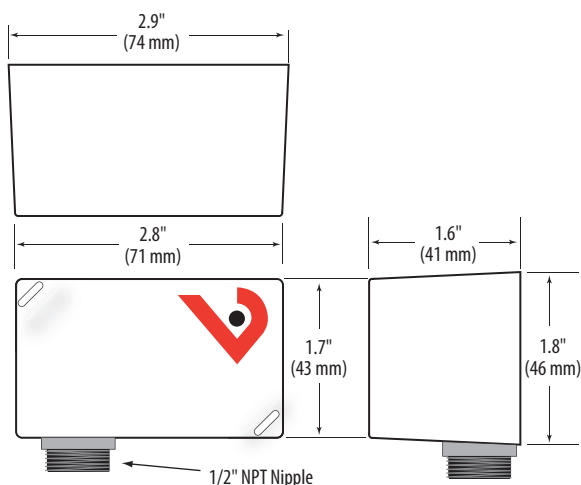
Gauge

UL1015; Coil: 18 AWG; Contacts: 12 AWG; Status: 16 AWG

UL 508 closed device listing

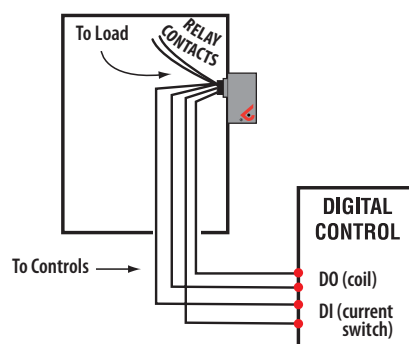
Do not use the LED status indicators as evidence of applied voltage.

DIMENSIONAL DRAWING

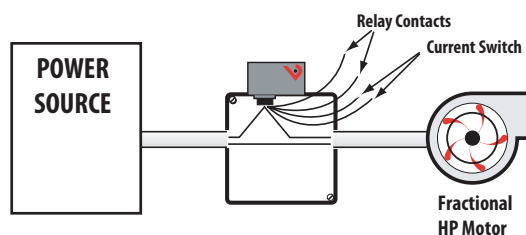


APPLICATION/WIRING DIAGRAMS

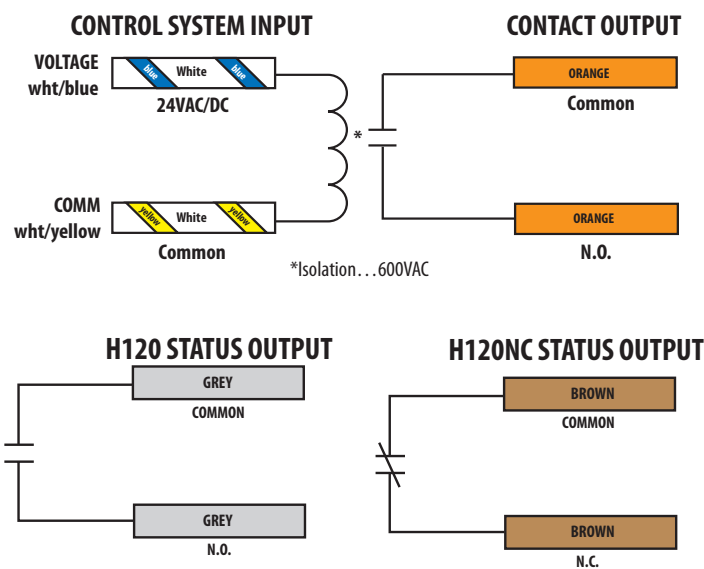
Nipple mount directly to a panel



Nipple mount to 4x electrical box



WIRE COLOR CODES



RELAY CONTACT RATINGS (N.O.)

Resistive.....	20A(r)*@277VAC/28VDC (250,000 Cycles)
Motor.....	120VAC, 1HP 208VAC, 1HP 250VAC, 2HP 277VAC, 2HP
Ballast.....	277VAC, 20A
Tungsten.....	120VAC, 10A

TYPICAL COIL PERFORMANCE

Voltage	Coil Current	
	AC	DC
24V.....	75mA	32mA

*See operating temperature specification

ORDERING INFORMATION



MODEL	AMPERAGE RANGE	COIL	RELAY	STATUS OUTPUT	TRIP POINT	HOUSING	RELAY POWER LED	UL
H120	0.1A - 20A	24VAC/DC	SPST, N.O.	N.O. 100mA@30VAC/DC	0.1A or less	Nipple Mount	●	●
H120NC				N.C. 100mA@30VAC/DC			●	●